

PT. OF N.W. 1/4 OF SEC. 4, T.5 N., R.1 W., S.L.B. & M. & PT. OF S.W. 1/4 OF SEC. 33, T.6 N., R.1 W., S.L.B. & M. 60

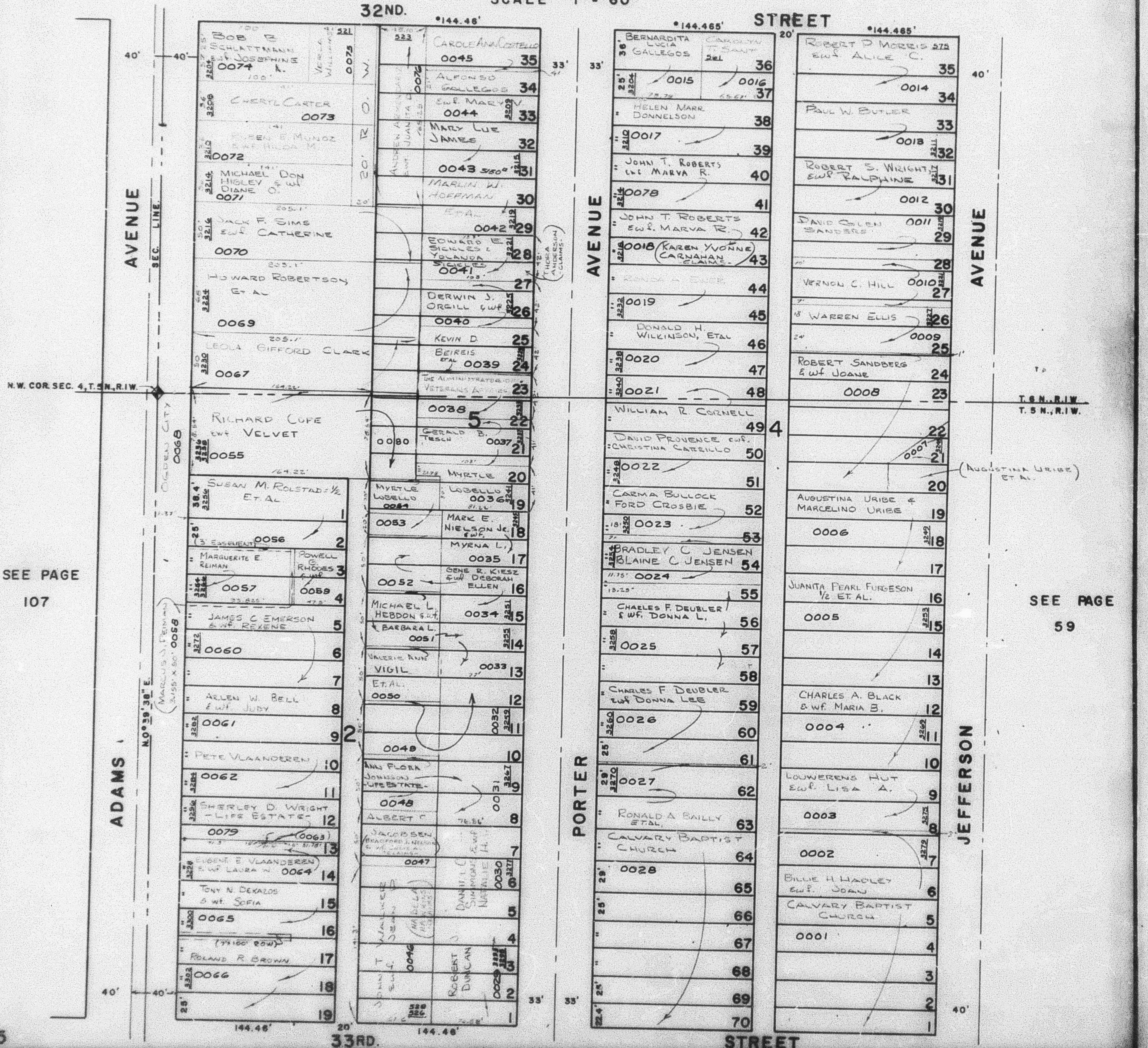
BLK'S. 4, 5 EAST PARK ADD'N. & BLK. 2 STEPHEN'S FIRST ADD'N.

TAXING UNIT: 25

IN OGDEN CITY

PREFIX: 05-060

SCALE 1" = 60'



SEE PAGE 107

SEE PAGE 59

SEE PAGE 93